

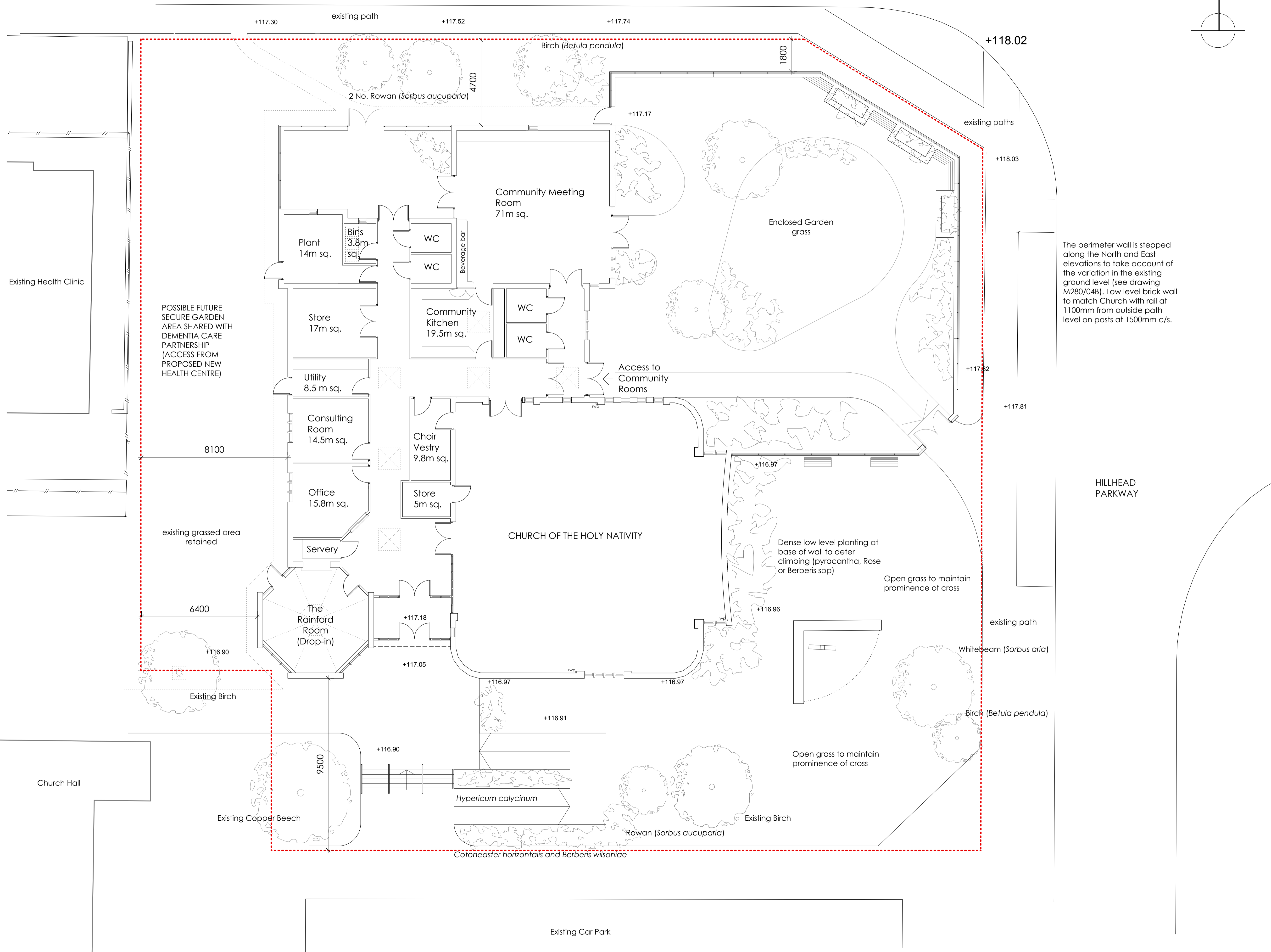
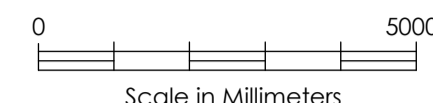
HANOVER CLOSE

+117.22

+117.39

+117.61

NORTH



- REVISION
- A May 2008 Amendments to garden boundary and general minor revisions
  - B July 2008 Amendments to room names
  - C Aug. 2008 Community Meeting Room and boundary fence amended
  - D Aug. 2008 Community Meeting Room amended
  - E Aug. 2008 Note amended to low level brick wall with weldmesh panels
  - F Aug. 2009 Surrounding development removed
  - G Sep. 2009 Redesign following DCP departure
  - H Oct. 2009 Low level wall and railing added to North West corner

CHURCH OF THE HOLY NATIVITY  
CHAPEL HOUSE ESTATE  
NEWCASTLE UPON TYNE

PROPOSED PLAN OF CHURCH  
DEVELOPMENT (EXTRACT)

Scale  
1:100 at A1

Date  
April 2008

Author  
csm

Spence and Dower,  
Chartered Architects,  
Column Yard, Cambo, Morpeth,  
Northumberland, NE61 4AY  
Tel: (01670) 774448  
Fax: (01670) 774446  
architects@spenceanddower.co.uk

M280 / 03

Rev.  
H