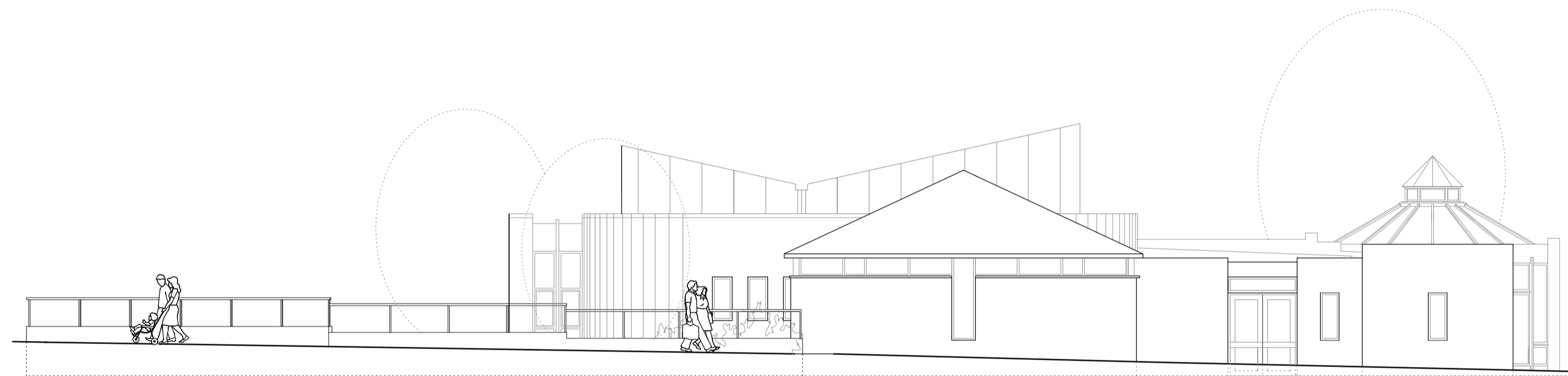
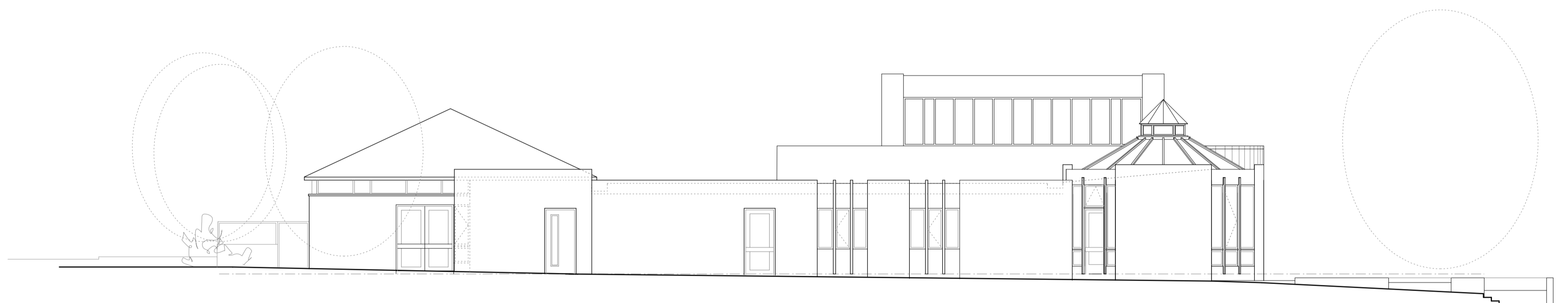


SOUTH ELEVATION

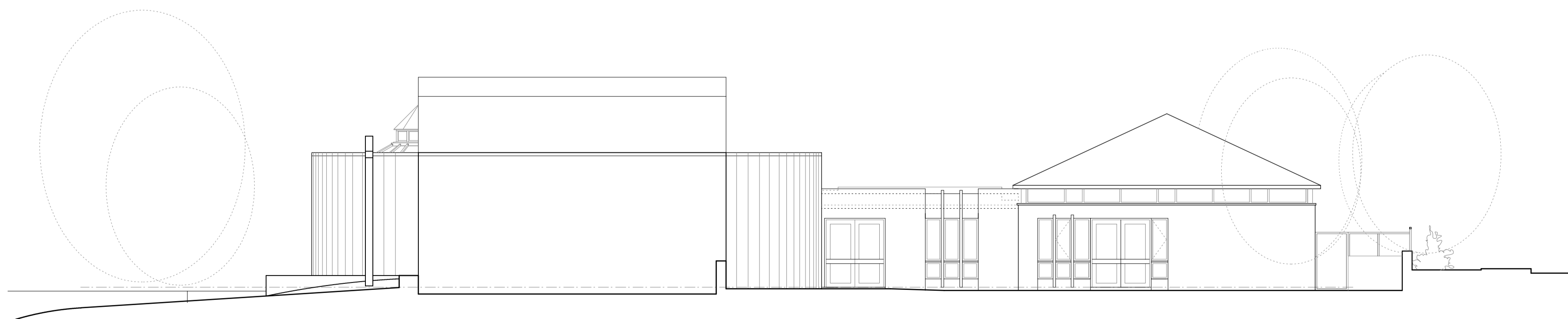


NORTH ELEVATION

NORTH ELEVATION



WEST ELEVATION



EAST ELEVATION

Materials:

- Walls: Istock Silver Grey Rustic Bricks to match existing Church
- Windows: Single glazed windows to be replaced with double glazed black powder coated aluminium frames to match existing. All new windows to match
- Doors and Screens at front and rear entrances: Aluminium frames (as existing Church)
- Roofs:
1. Flat roof over areas West and North of Church
Icopal Elastomeric Felt System on Kingspan Insulation
 2. Octagonal roof over Rainford Room
Sarnafil Copper Finish Felt System with batten profile over insulation to match the copper-felt finish of the vertical walls of the butterfly roof over the Church
 3. Community Meeting Room roof
Welsh slate
- Rooflights:
- To flat roof, Coxdome double skin polycarbonate pyramidal lights with controlled ventilation and security fixings etc. 1200 x 1200mm
- Perimeter fence:
- Low level brick wall to match Church with rail at 1100mm from outside path level on posts at 1500mm c/s. Spaces between posts fitted with light galvanised weldmesh panels (75mm x 75mm mesh)

REVISION

- A May 2008 Amendments to garden boundary and general minor revisions
- B June 2008 Dimensions added to perimeter fence
- C July 2008 Window material amended
- D Aug. 2008 Boundary treatment changed and windows added to Community Meeting Room
- E Aug. 2008 North Elevation amended
- F Aug. 2009 Addition of North and West Elevations for Church building
- G Sept. 2009 Redesign following DCP departure

CHURCH OF THE HOLY NATIVITY
CHAPEL HOUSE ESTATE
NEWCASTLE UPON TYNE

PROPOSED ELEVATIONS

Scale
1:100 at A1

Date April 2008	Rev. csm
--------------------	-------------

Spence and Dower,
Chartered Architects,
Column Yard, Cambo, Morpeth,
Northumberland, NE61 4AY
Tel: (01670) 774448
Fax: (01670) 774446
architects@spenceanddower.co.uk

M280 / 04	Rev. G
-----------	-----------